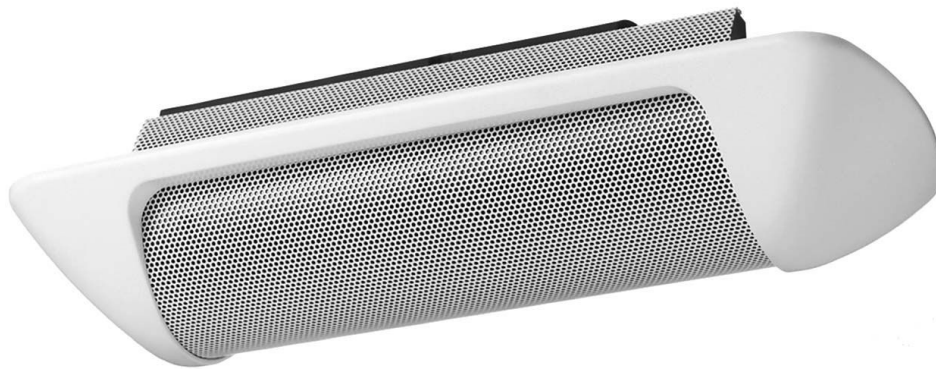


H-1 EU

SPEAKER SYSTEM

The H-1 is a cylinder-shaped, small flush-mount 2-way speaker that ensures quality sound reproduction. The mounting angle for its enclosure can be adjusted for up to 90 degrees.



Order no: H-1 EU

Specifications

Frequency response	120 Hz - 20 kHz
Connection	Detachable screw terminal
Sensitivity (1#V, 1#n) (combined)	85 dB
Speaker component	8 x 5 cm cone woofer (neodymium magnet); 2.5 cm balanced dome tweeter
Rated input	12 W
Tappings	12 / 6 / 3 W (100 V), 12 / 6 / 3 / 1.5 W (70 V)
Rated impedance	4 Ω, 16 Ω, 70 V, 100 V
Power handling capacity	90 W (continuous program, 4 Ohm), 30 W (continuous pink noise, 4 Ohm)
Weight	1,5 kg
Certificates	Ease
Dimensions (W x H x D)	312 x 126 x 90 mm
Dimensions (ø x D)	x 90 mm
Gross weight	2 kg
Finish	ABS resin, paint, signal white (RAL 9003 or equivalent)

H-1 EU

SPEAKER SYSTEM

Appearance

